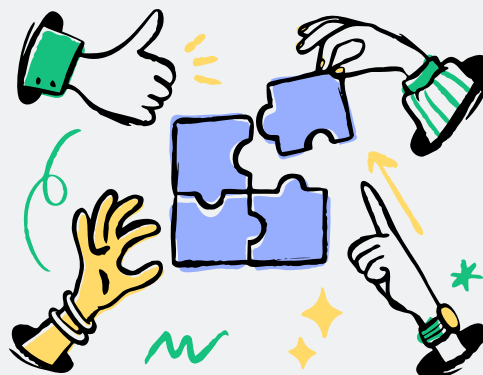


OUR PARTNERS



Staff within SIR will work collaboratively with partner agencies to ensure that the health and wellbeing of our young people is supported and developed.

We engage with partners from inside and outwith IRAC to ensure the needs of every young person are met



Contacts

Alan Knox
Jacqui Marwick

01294 278756

Kilwinning Road, Irvine, KA12 8SJ

irvineroyal@ea.n-ayrshire.sch.uk

SECONDARY INCLUSION RESOURCE

Irvine Royal Academy



#BELIEVEINBETTER

IRVINE ROYAL ACADEMY
Ambition • Respect • Responsibility

WHAT IS THE SIR?



Our Secondary Inclusion Resource (SIR) is an enhanced support resource. It is available for targeted young people across our school community.

Youth people within SIR will benefit from enhanced approaches to their curriculum. This will better enable them to get the most from their education within Irvine Royal Academy

WHAT SHOULD YOU EXPECT?

1

Staff within SIR will ensure that each young person is at the heart of the planning process. Their views are so important to ensuring their success.

2

Staff will update you regularly with interventions and progress. We will work collaboratively with you to look at further supports that may be needed to ensure barriers are addressed and each young person achieves.

3

This will enhance the learning experience for our young people.

SIR STAFF

Alan Knox - PTG

Jacqui Marwick - PTG

Mrs Marwick & Mr Knox are the driving force within our flexible curriculum. Young people in their charge will attain and achieve SQA awards and their wellbeing supported.

Joyce Murray - Class Teacher

Mrs Murray supports young people emotionally, socially and in making positive choices. She also supports them in their attainment and achievement.

Chiara Sheridan - Youth Worker

Chiara supports our young people in a variety of ways – from organising extra-curricular trips & excursions; to supporting them to secure qualifications. Chiara is committed to the development of strong home/school links.

Kyle Hughes- PSA

Kyle supports our young people in SIR and in class. He develops opportunities for our young people to learn in different environments and links with partner agencies.

ACADEMIC PROGRESS

Working in collaboration with subject teachers, learning will continue in the SIR and will complement the high quality learning & teaching each young person receives across the school.

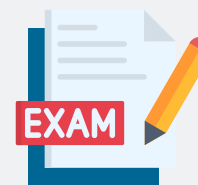


We promote our non-negotiables in the SIR:



BGE (S1-S3)

All pupils in BGE will engage in creative ways of learning and experience wider achievement opportunities.



Senior Phase (S4-S6)

All S4-S6 young people accessing the SIR will secure at least 5@ National Qualifications

#believeinbetter